



Lanterns

Ceramics 1: Project 2



Big Idea

- Prompt: Think through the three lists and pick ONE thing you identify most with.
- Project: This will be your theme for your project.

Seasons	Times of Day	Elements
Winter	Sunrise	Water
Spring	Daytime	Earth/Rock
Summer	Sunset	Fire
Fall	Night	Wind



Seasons



Times of Day





Elements



Requirements

1. Lantern must be a creative response to the theme.
 - a. Same as last project: original ideas, no copying, etc.
 - b. Should incorporate identity/personal connection
 - c. 75 points !



Requirements

2. Slab-building technique

3. Should be at least 5 inches

a. Not including lid, so with lid and handle it should be around 6 or 7

Requirements

4. Use of both hand drawn and stamped texture as decoration
 - a. In addition you will be creating and using your own stamp



Requirements

5. Lid (with flange)

- a. This will have it's own demo day



Requirements

6. Sculptural element

- Could be creative handle on lid, sculptures on side, etc.



Requirements

7. Each side must have at least 30% cut outs



Requirements

9. Bonus: Foot/feet on the bottom of the structure
- Same concept as the ring on the bottom of saucers
 - Can be decorative or simply structural
 - 15 bonus points !



Requirements

8. Workbook must be completed by Friday the 8th and turned in to me. I will sign for approval and give feedback and return them to you Monday the 12th.
 - a. If you do not have this packet back and approved by Monday, you cannot start your project.
 - b. This workbook is worth 100 points !
- Student Brainstorming
 - Lantern Sketches and Notes
 - Inspiration Analysis (mini combo of Feldman's and research)

Walk Through of Process

- We will go over individual steps as we go, but looking at the whole process and end goal now will help you sketch and plan.
- https://www.amaco.com/lesson_plans/71



Brainstorming and Peer Review

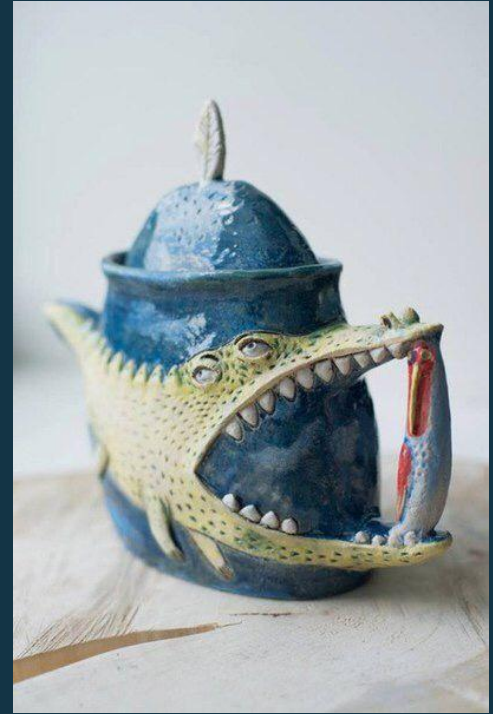
- Continue Brainstorming and sketching
- If you are done, find a buddy that is done and PEER REVIEW
 - Get in groups of 2-4.
 - Use handout to guide discussion
 - Take notes on what your peer says about your work
 - Put 5 key takeaways on the back of your detailed sketch page.
 - I will check this with your packet turn-in on Friday.
 - Adjust your sketch/plan if needed.

Requirements

1. Lantern must be a creative response to the theme
2. Slab-building technique
3. Should be at least 5 inches
4. Use of both hand drawn and stamped texture*
 - a. Tomorrow we will be making our own stamps, so start planning what stamp you could make to use
 - b. Check out what stamps we have available so you know what to make.
5. Lid
6. Sculptural element*
7. 30% cutouts on each side*
8. Workbook due FRIDAY*
9. Bonus: Feet/foot ring

Review of “Sculptural Element”

- Sculptural element is an ADDITIVE piece. Little sculpture!
- Can be on the side, can be on the lid, can function as the handle.



Stamps

1. Roll into small coil/cone
 2. Flatten one end
 3. Carve or sculpt shape
 4. Clean piece
 5. Put your name on the bottom or side
 6. Let it sit and dry
- [Making Stamps Video](#)
-
- Make 1-3 stamps
 - Consider your theme and design and make sure to look in the stamp drawer to see what is already available



Stamps



Brainstorming and Peer Review

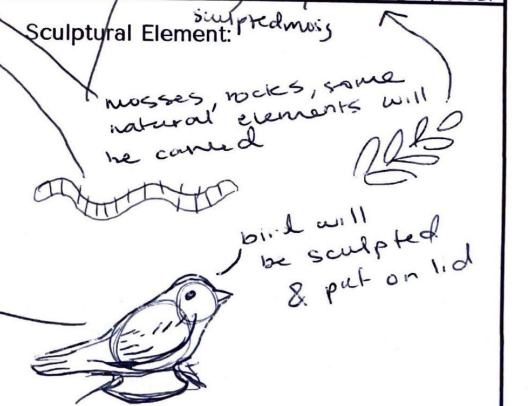
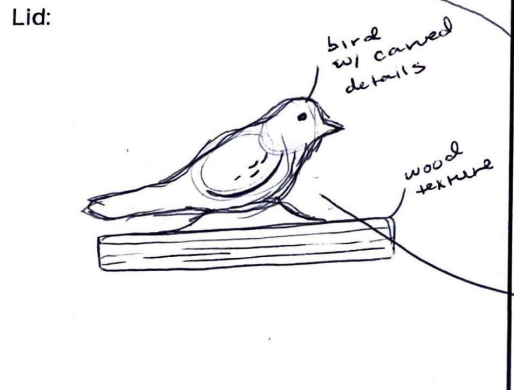
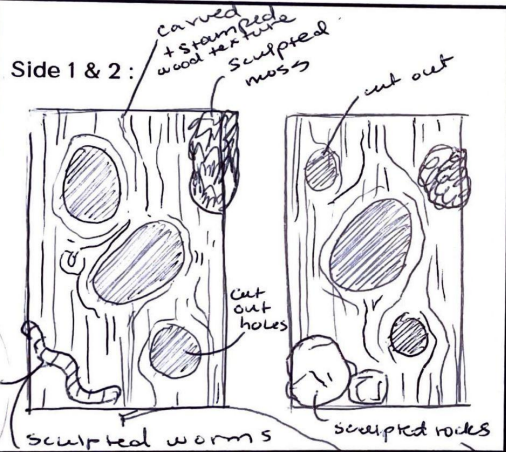
1. Brainstorming/ Sketches
 - a. Workbook due FRIDAY
2. Peer Review
 - a. 5 key takeaways on separate paper or back of brainstorming page
3. Stamps
 - a. Look back at steps
 - i. ArtMafia website → ArtMafia Daily → Lantern Slides → Slide 18 → Watch video and read steps
 - b. Make 1-3
 - c. Be sure to check what's already available in drawers

Friday- Check-In

DUE TODAY:

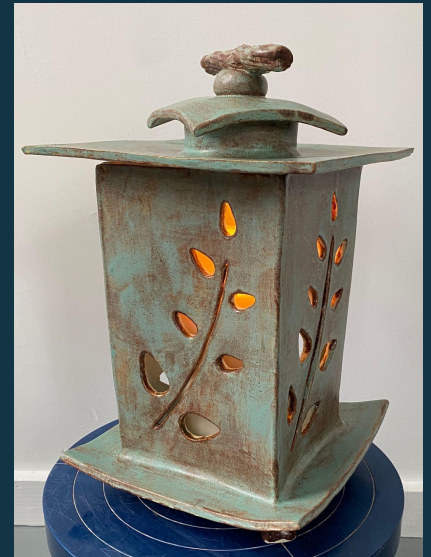
- ❑ Packet
 - ❑ Brainstorming
 - ❑ Detailed Sketch
 - ❑ Inspiration Analysis (3 sentences for each Q)
 - ❑ Peer Review (5 key takeaways)
 - ❑ Stamps
-
- Must be turned in by the end of class or you can not start with clay Monday. (Late = -25)

My theme is Earth & I interpreted it as
 Brief Description: nature & trees. I plan to make my lantern
 look like a glowing tree stump.



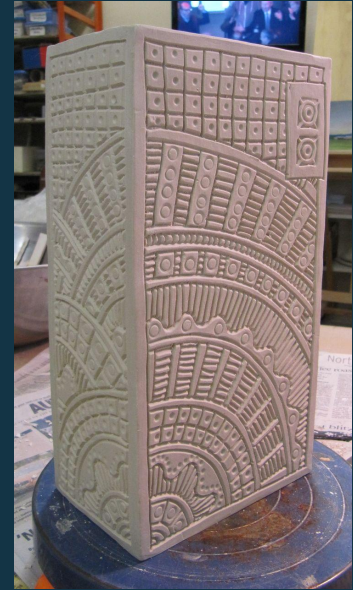
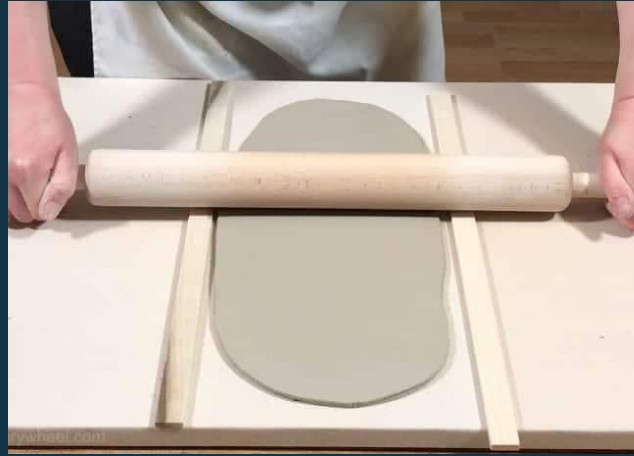
Plan for the Week

- Sketches/Plans
 - Read the feedback, chat with me if you have Qs
- MONDAY
 - Rolling slabs, creating texture
- TUESDAY
 - Finishing slabs and texture, cutting the slabs
- WEDNESDAY
 - Assembling the box
- THURSDAY
 - Workday, finishing up
- FRIDAY
 - No school**



Monday

- Rolling slabs
 - Enough slabs for 4 sides and the bottom
 - Reference template handout for sizing
 - Use $\frac{3}{8}$ sticks for even thickness!
- Creating texture
 - Hand drawn and stamped
 - Pre-made and your own stamps



Stages of Clay



Joining clay together

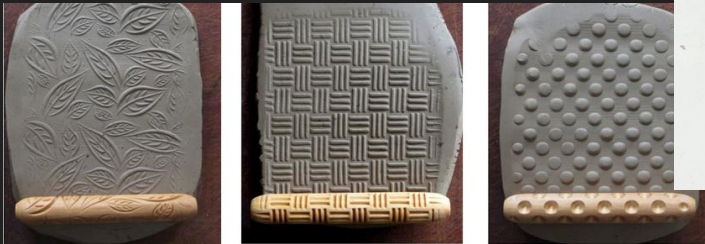
Rolling slabs, creating texture, sculpting

Assembly, Cut-outs/ carvings

Finished lantern, ready for firing

Tuesday

- Finishing slabs
- Finishing texture (Use your stamps today!)
- ONCE TEXTURE IS DONE...
- Then cut the precise walls using your template



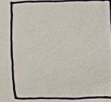
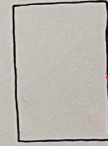
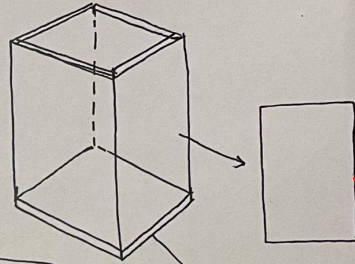
LANTERN ASSEMBLY TEMPLATE

CERAMICS 1 : UNIT 2

NAME: _____

BLOCK: _____

- This template can be used to measure your slabs and cut exact measurements.
- All four sides should be 5 in x 4 in.
- The bottom should be $4\frac{1}{4}$ in x $4\frac{1}{4}$ in. This extra $\frac{1}{4}$ in. leaves room to blend together later.



CUT THESE OUT
& USE AS TEMPLATE
FOR SLABS

- 4 Side walls
 - 4 x 5

- 1 Base
 - $4\frac{1}{4} \times 4\frac{1}{4}$

← $4\frac{1}{4}$ in →

← 5 in →

↑ 4 in ↓

↑ $4\frac{1}{4}$ in ↓

BASE

WALL/SIDE

HOW TO CUT ANGLED WALLS



Start with your slabs



(texture on outside)

cut slab edges at 45°
 45° angle



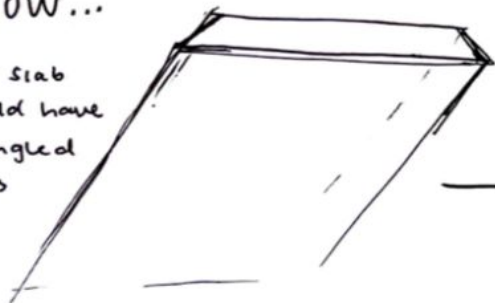
use knife tool!



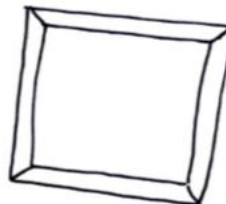
texture on outside

NOW...

your slab should have 45° angled edges



AND...
it will fit together like this!



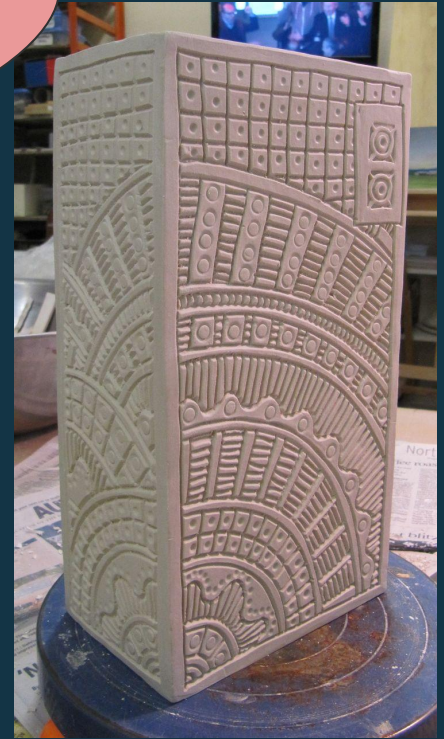
Wednesday

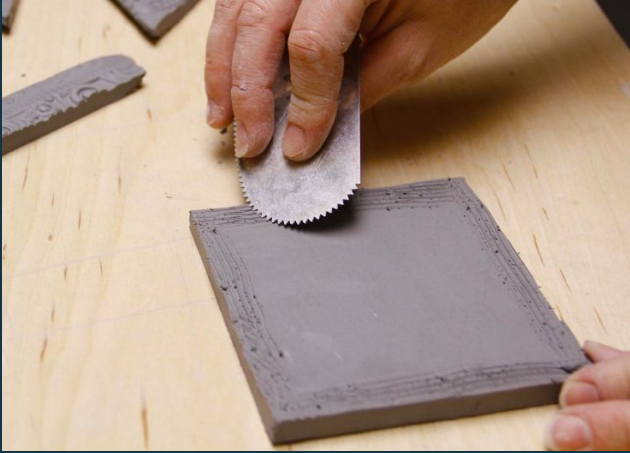
- Assembly Day
 - Quick demo

In-Progress Check

- 4 walls, 1 base (evenly cut, with angles)
- Texture on pieces
- Assembly started
- Plan to finish box form by Thursday end of class
 - Next steps

*Place spoon in cup today!!





Remember to support your piece as you work so it doesn't collapse!

1. Slip and Score
2. Place pieces together
3. Blend pieces
4. Add thin coils as "glue" if needed

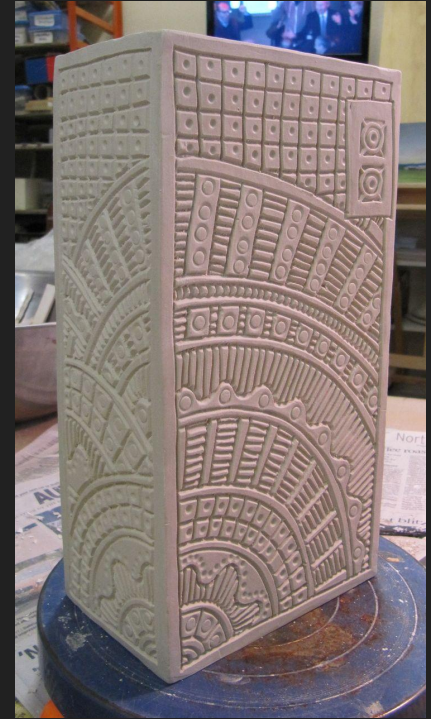


Thursday

- Finish assembling your lanterns
 - Finishing in-progress checks
- Wrap your piece really well (4 day weekend)

Next week:

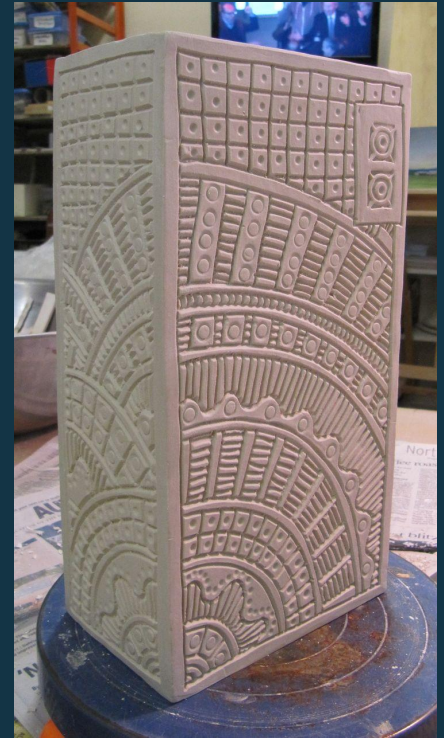
- Lids
- Sculptural elements
- Handles
- Foot/Feet (Bonus)
- Cut-outs
- Finishing touches!



Plan for the Week

- TUESDAY
 - Lid demo (and mini demos for those wanting to make different lid shapes)
 - Cut-out demo
 - Sculptural element & foot reminders
- WEDNESDAY
 - Workday
- THURSDAY
 - Glaze Discussion
 - Workday, finishing up
- FRIDAY
 - Workday, finishing up

PROJECT DUE NEXT WEDNESDAY!!! ***



Lids

- Different types of lid
- [Sculpting with Air Dry Clay: Flanged Lid for Slab Box, part 3/3](#)

1. Flat slab lid *



2. Triangle/Cone Lid

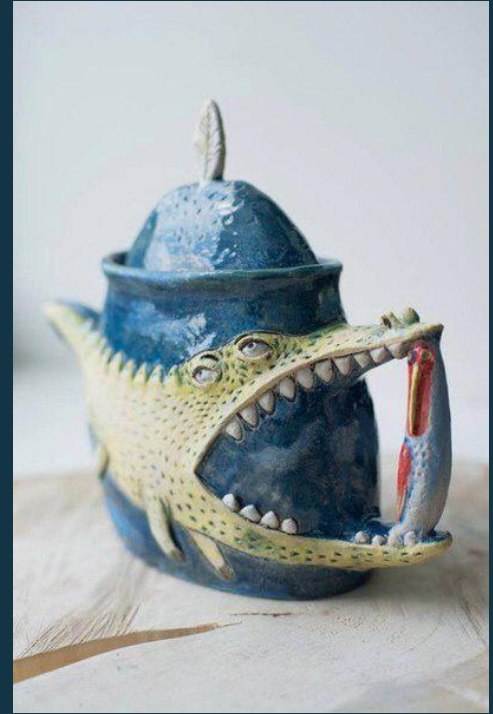


3. Reverse lid



Review of “Sculptural Element”

- Sculptural element is an ADDITIVE piece. Little sculpture!
- Can be on the side, can be on the lid, can function as the handle.



Cut-Outs

- Each side must have at least 30% (1/3) cut-outs !!
- This is part of your grade



Craftsmanship

- 50 points on the rubric
- Reflects time and effort
- Clean edges, clean cutouts, no unintended texture



Wednesday

WORKDAY

- You can work on.....
 - Lid (with handle and flange)
 - Cut-outs
 - Feet (Bonus!)
 - Sculptural Element
 - Decoration and Detail

- Final due date next Wednesday
 - Finishing up this Friday
 - Final Artist Statement and Survey/Feedback due Wednesday
 - New project next week and glazing teacup set

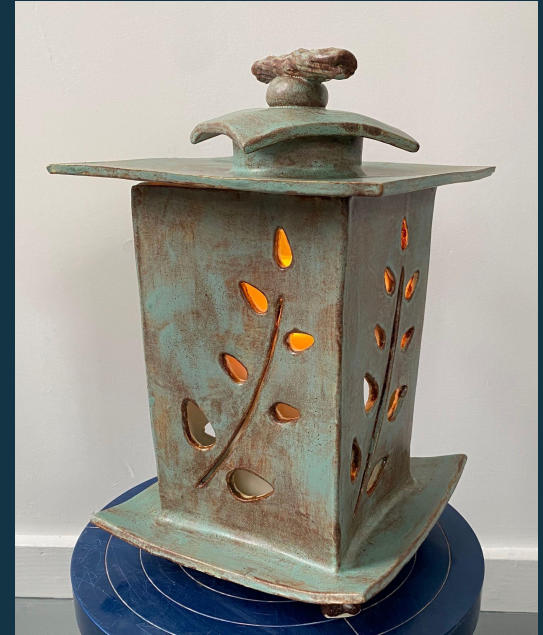


Thursday

WORKDAY

- You can work on.....
 - Lid (with handle and flange)
 - Cut-outs
 - Feet (Bonus!)
 - Sculptural Element
 - Decoration and Detail

- Final due date next Wednesday
 - Finishing up this Friday/Tomorrow
 - Final Artist Statement and Survey/Feedback due Wednesday
 - New project next week and glazing teacup set



Friday

WORKDAY

- You can work on.....
 - Lid (with handle and flange)
 - Cut-outs
 - Feet (Bonus!)
 - Sculptural Element
 - Decoration and Detail

- Final due date next Wednesday
 - Finishing up TODAY
 - Final Artist Statement and Survey/Feedback due Wednesday
 - New project next week and glazing teacup set



Plan for the Week

- MONDAY
 - Workday:
 - Finishing up lanterns
 - Packet
- TUESDAY
 - Workday:
 - Finishing up lanterns
- WEDNESDAY
 - Lanterns and packets due !!!
 - Mini-show with lights
- THURSDAY
 - Quick survey for Ms.P
 - Finish glazing teacup set
- FRIDAY
 - Turn in glazed teacup set



Monday

WORKDAY

- Finishing up the lanterns
 - Look back at requirements if needed for guidance
 - Artist statement page
 - Turn in with your project when you are done
 - Glaze teacup assignment
-
- ASK Qs and pace yourself! You got this :)



Tuesday

LAST WORKDAY

- Finishing up lanterns and artist statement
- Both DUE TOMORROW (Wed. 28th)

- Check requirements
- Ask Q's, and take your time (Make sure this is something you're proud of and want to keep!)

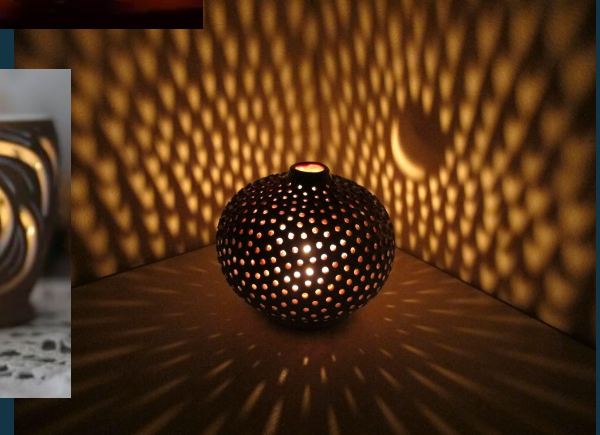
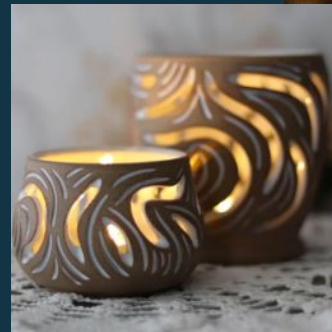
Wednesday

FULL WORKDAY

- Finishing up lanterns and artist statement
- ****Both DUE TOMORROW (Thurs. 29) by the end of class****
 - Reminder: -25/250 for late, but want you to have something you're proud of
- Studio reminders:
 - Brushes go in drawers under glaze test tiles
 - Sponges go in bucket on island
 - Be respectful, keep space clean

Thursday (1st Block)

- Workday and Mini-show
 - 8:05-9:00
 - Worktime for Lantern
 - 9:00-9:25
 - Clean up Area
 - Show off your lantern and walk around to see everyone elses
 - Place lantern on kiln room shelves when done



Written Response

- Get out a piece of paper.

Walk around the room and find a lantern by a classmate you are not familiar with.

Answer these questions with 2 complete sentences each:

- Why were you drawn to this work?
- What would you change about this work?
- Any other feedback?

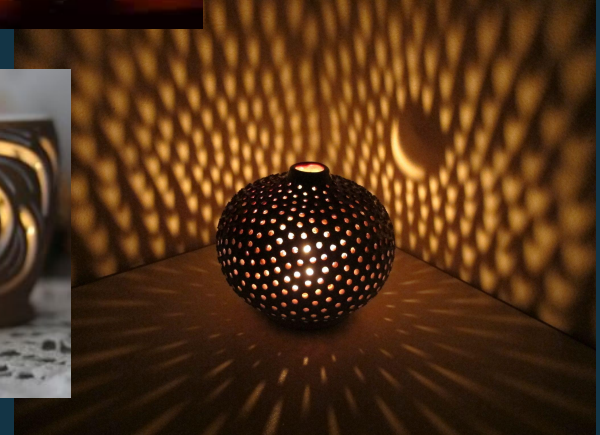
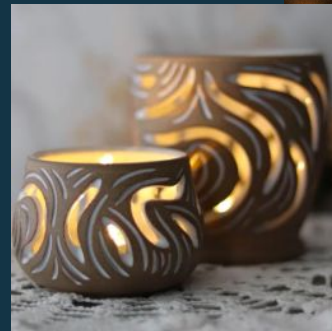
Repeat for a total of 2 artworks (should be at different tables).

Turn this paper in at the end of class. Thoughtful written responses will get 5 bonus points on their project.

Thursday (3rd Block)

- Workday and Mini-show
 - 12:05- 12:20
 - Get out lanterns, when your table is ready you'll get candles, take a few minutes to view in the closet
 - 12:20-1:35
 - Work time

Place lantern on kiln room shelves when done and hand me your packet



Written Response

- Get out a piece of paper.

Walk around the room and find a lantern by a classmate you are not familiar with.

Answer these questions with 2 complete sentences each:

- Why were you drawn to this work?
- What would you change about this work?
- Any other feedback?

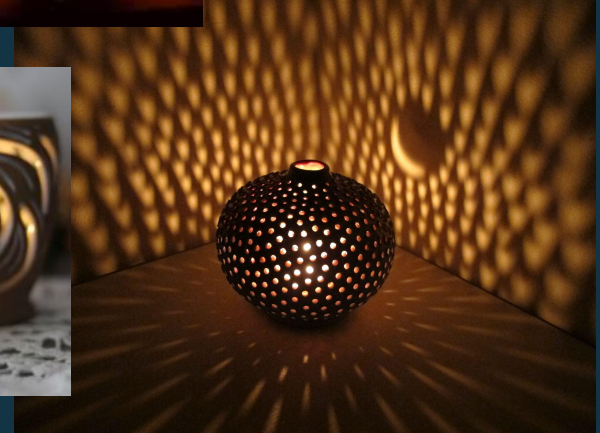
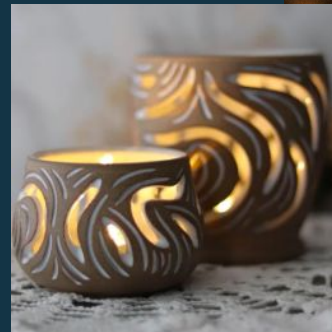
Repeat for a total of 2 artworks (should be at different tables).

Turn this paper in at the end of class. Thoughtful written responses will get 5 bonus points on their project.

Thursday (4th Block)

- Workday and Mini-show
 - Get out lanterns, when your table is ready you'll get candles, take a few minutes to view in the closet
 - Work time

Place lantern on kiln room shelves when done and hand me your packet



Written Response

- Get out a piece of paper.

Walk around the room and find a lantern by a classmate you are not familiar with.

Answer these questions with 2 complete sentences each:

- Why were you drawn to this work?
- What would you change about this work?
- Any other feedback?

Repeat for a total of 2 artworks (should be at different tables).

Turn this paper in at the end of class. Thoughtful written responses will get 5 bonus points on their project.

Friday

Glazing Workday

- Finish up teacup set today
- Quick survey for Ms.P
 - <https://forms.gle/7TLB51vQpCdE1bMN9>
- This is a grade! Read the instructions.
- Once completed, submit and show me so I can give you full points!!!

THANK YOU :)

